

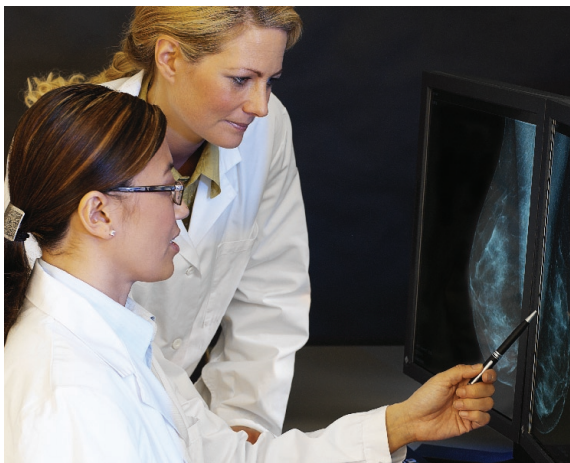
IDS5/mx.net

A multi-modality workstation dedicated to breast imaging



IDS5/mx.net is Sectra's diagnostic radiology workstation dedicated to breast imaging. This advanced multi-modality workstation has full PACS functionality and DICOM compatibility. It is designed in close cooperation with mammography specialists for an unsurpassed workflow.

IDS5/mx.net is equipped with dedicated tools to meet the special workflow and throughput requirements in mammography, both for screening and clinical examinations. IDS5/mx.net provides everything in one compact package; customized image display, personalized worklists, full overview, dedicated mammography keypad and image manipulation tools. With IDS5/mx.net, the user gets access to the entire image chain, including old and new images.



IDS5/mx.net is designed specifically with speed in mind. A dedicated keypad for an enhanced mammography workflow is included in the workstation. Images combined with PACS and RIS information are displayed instantly and all the information in both systems is available at the same workstation, at the touch of a key. The images are displayed according to your preferences, easing your workflow.



SECTRA

Features and benefits

Information window

The information window has highly intuitive menus based on a Windows® standard user interface. Both RIS and PACS information are displayed.

Image windows

The image windows include centrally stored personal settings accessible on any workstation. It has support for multiple-user profiles with user-specific language settings. All screen space is used for displaying images. IDS5/mx.net supports high-resolution monitors from several vendors.

Double reading

Double reading and support for double-reading scenarios with more than two readers involved. There is also support for blind double reading.

Support for mammography CAD

The workstation can use the content of a Mammography CAD Structure Report, extract the necessary data and display the findings.

Mirrored synchronization

Mirrored synchronization allows the user to compare corresponding areas in the left and right breast with the magnifying glass or by panning the zoomed images.

Toggle zoom with predefined zoom level

This feature enables a toggle zoom command with a predefined zoom level. The command could be used on the dedicated keypad, and the zoom level is configurable.

Mammography configuration utility

This package includes a standard set of series, examinations and Default Display Protocols (DDPs) for a mammography site. Screening and diagnostic examinations, as well as series types and the DDPs are included.

Point annotation

Point annotation can be added by simply clicking in the image to mark an interesting spot. This is typically used for mammography in a double-reading workflow.

Darker non-image windows

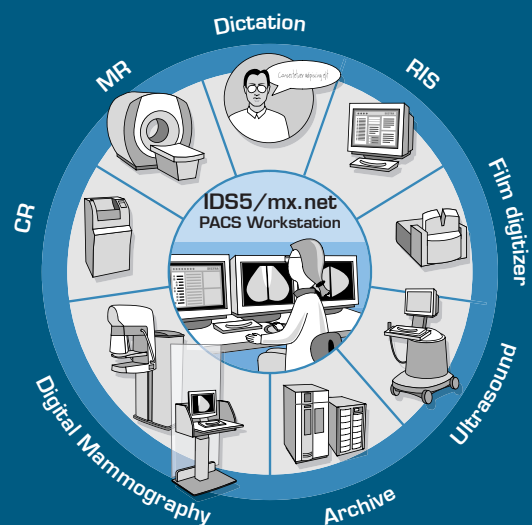
This feature will automatically dim the information window and the matrix window for the user. It is possible to configure the darkness of the dim effect and also whether it should be always on, always off or automatic on when the cursor is moved from the window.

Loop hanging forward and backward

This feature enables the user to switch between the last and first hanging with just one click. This means that in a standard mammography DDP, the comparison of old/new, left/right and CC/MLO is always just one click away.

Horizontal and vertical alignment of images

Images can be aligned horizontally or vertically. It is crucial to place the images back to back when comparing left and right breasts or current and prior image.



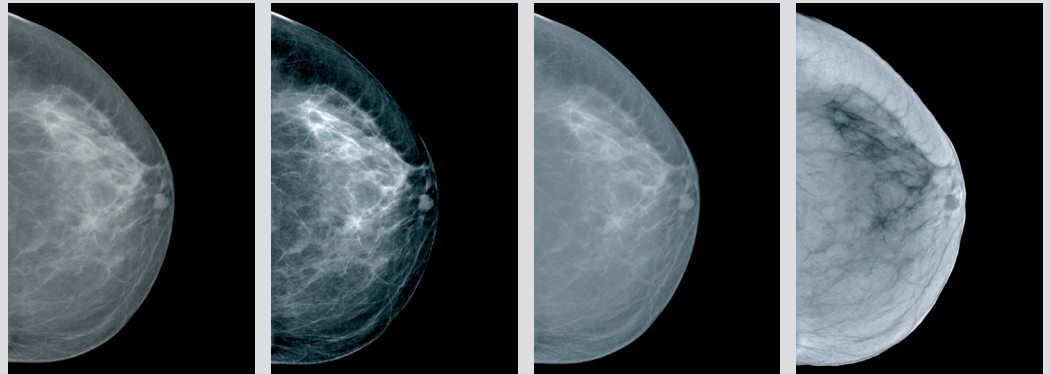
IDS5/mx.net is a true multi-modality workstation and a powerful tool for reviewing digital breast images from all vendors as well as all modalities.

The right tools

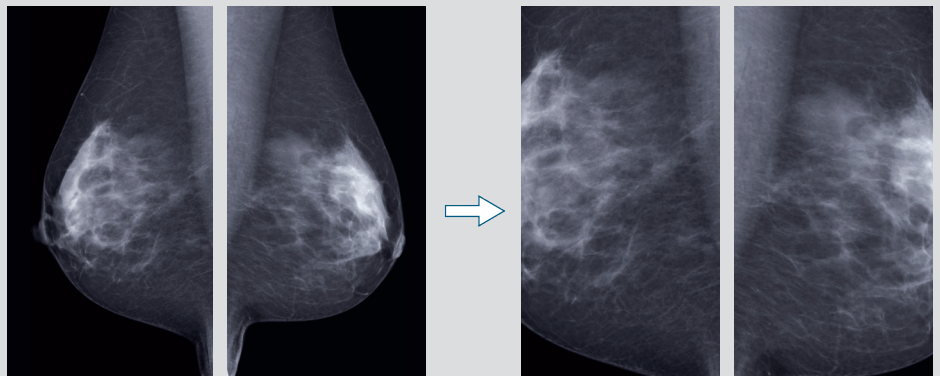
IDS5/mx.net includes tools for fast and accurate diagnosis, such as:

- Measurements - distances, regions/area.
- Annotations - text, arrows, circles.
- Possibility to mark the cases with result codes, for example, finding assessments.
- Zoom in full resolution - quadrant zoom, mirrored zoom and synchronized zoom.
- Possibility to prepare and perform optimized clinical demonstrations. All interesting cases can be stored in individual worklists and shown during clinical demonstrations, or used for teaching.

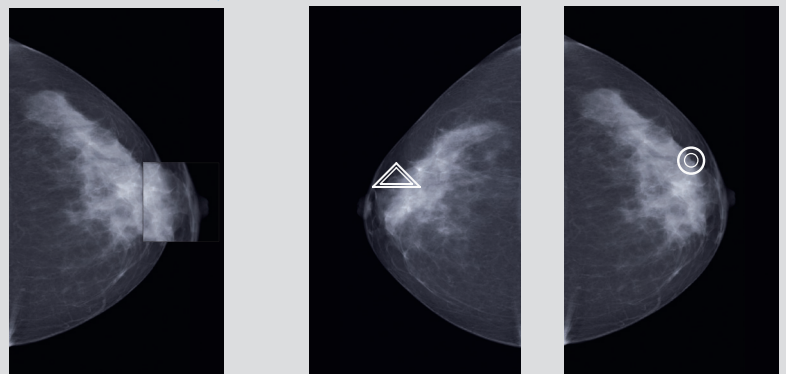
Predefined windows for soft tissue, "normal" and dense tissue, as well as inverted images.

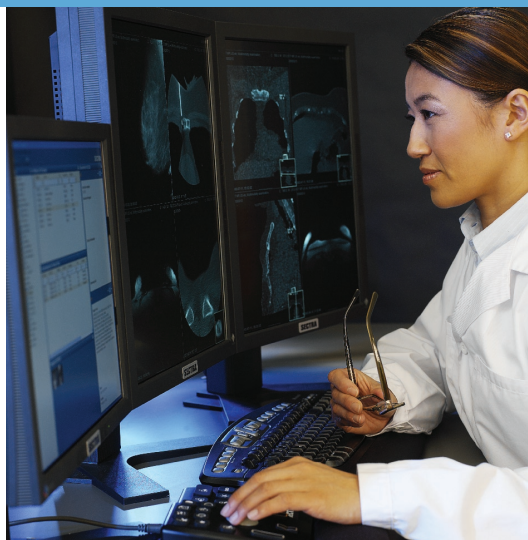


Synchronized zoom in full resolution



Magnifying glass and integrated CAD (Computer Aided Detection). By pressing the CAD button on the keypad the results of the CAD analysis are displayed.





Your Partner in PACS

SECTRA

World Headquarters

Sectra Imtec AB

Teknikringen 20
SE-583 30 Linköping, Sweden
Phone: +46 13 23 52 00
E-mail: info.imtec@sectra.se

USA

Sectra North America

Phone: +1 203 925 0899
E-mail: info.imtec.na@sectra.com

Australia/New Zealand

Sectra Pty Ltd.

Phone: + 61 2 9420 1620
E-mail: info.imtec.anz@sectra.com

Germany/Switzerland/Austria

Sectra GmbH

Phone: +49 241 963 2650
E-mail: info.imtec.de@sectra.com

United Kingdom/Ireland

Sectra Ltd.

Phone: +44 1908 673 107
E-mail: info.imtec.uk@sectra.com

Norway

Sectra Norge AS

Phone: +47 67 58 97 70
E-mail: info.imtec.no@sectra.com

Denmark

Sectra A/S

Phone: +45 45 65 06 00
E-mail: info.imtec.dk@sectra.com

Spain/Portugal

Sectra Medical Systems SL

Phone: +34 91 444 26 00
E-mail: info.imtec.iberia@sectra.com

Italy

Sectra Italia S.r.l.

Phone: +39 0382 17 500 48/49
E-mail: info.imtec.it@sectra.com

For further information visit www.sectra.com/medical